

Series  
**4060**  
Gas Chromatographs



# 4060 SERIES - GAS CHROMATOGRAPHS

## Series 4060 Overview

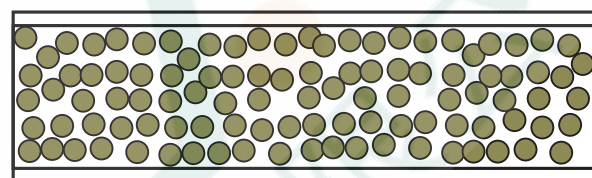
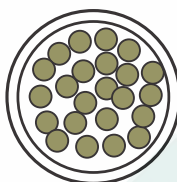
The Teledyne Analytical Instruments (TAI) Series 4060 speciates gases of interest by combining well-accepted gas chromatography techniques with TAI's field-proven detector technologies. This combination, along with effective electrometer-based signal amplification and temperature control, enables the Series 4060 to detect either single or multiple compounds in a background gas possessing potentially interfering compounds.



Gas Chromatography Column

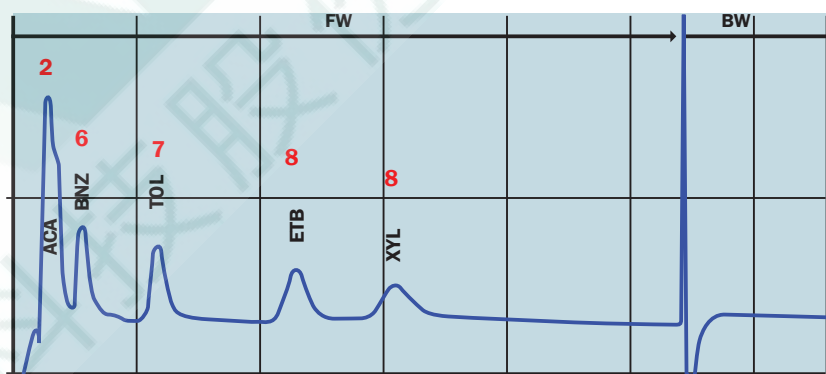
## Gas Chromatography

Component separation is achieved using an appropriate packed column. The column consists of a suitable length of inert stainless steel tubing packed with particles of porous polymer or bonded phase materials of varying length and diameter (per application). The coating interacts less with smaller and more volatile compounds, causing them to pass more quickly through the column than larger and less volatile compounds. In some cases, multiple columns may be employed to achieve a quick and thorough speciation of the parameters of interest.



Cross-Section of a Column

## Chromatogram

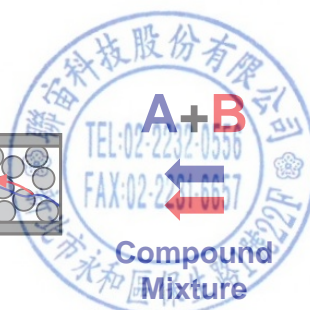
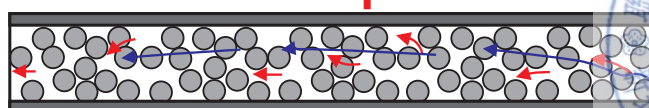


Retention Time

An inert carrier gas is used to push the sample through the column at a constant flow rate. With proper temperature and pressure control, the time it takes each gas to exit the column is repeatable.

The sample exiting from the column then passes through the detector. The sensor response during the time a gas of interest is detected is integrated into a volumetric concentration.

## Column Separation





## 4060 SERIES - GAS CHROMATOGRAPHS

### Sample Handling System

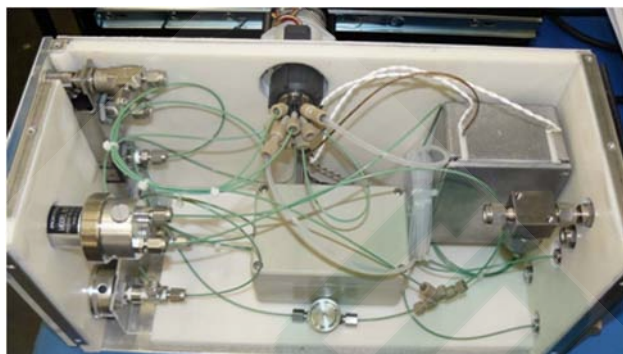
Optimal control of temperature and flow rates for the column, detector and sample handling components is critical for stable, repeatable readings. The Model 4060 sample system is sealed and insulated, utilizing PID controllers to ensure the ultimate temperature stability of the switching valve and column/detector compartment. Tubing, fittings and components within the sample system are 300-series stainless steel and Teflon.

The carrier gas and other applicable utility gases are regulated using miniature stainless steel regulators with gauges for precise pressure control. Proper flow rates to the detector are ensured with fixed orifices. All adjustable pressure and flow devices are easily accessible from the front panel. Both rack-mount and wall-mount configurations provide easy access to sample system components for maintenance.

The 4060 utilizes a switching valve with two states. The first is a sampling state, which collects a precise volume of the sample while bypassing the carrier gas to the vent. The valve is then actuated to an analysis state where the speciated gas of interest is then pushed through the sample loop by the carrier gas and on to the detector for analysis. The signal peaks are then collected and the gas concentration(s) measured and displayed.



PID Controllers



4060A TCD Rack-Mount Analysis Compartment



4060B FID Wall-Mount Analysis Compartment

# 4060 SERIES - GAS CHROMATOGRAPHS

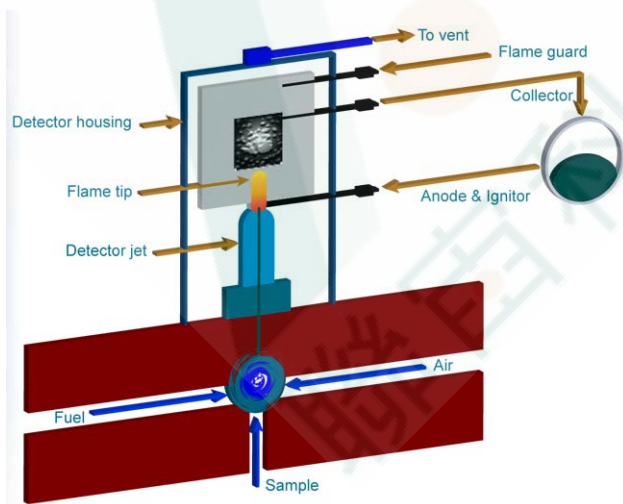
## Detector Technologies

### Flame-Ionization Detector (FID)

Because of its high sensitivity to most organic compounds, the flame ionization detector is a powerful tool for measuring hydrocarbon impurities in gases. It also provides a linear response over a wide range of analysis.

Figure A shows the general construction of an FID. Organic compounds from the sample stream or separation column are injected into the detector housing where they are mixed with Hydrogen and air before entering the detector jet where the mixture is burned.

During this process, organic compounds are broken down into carbon fragments and acquire a positive charge (i.e., become ionized) at the surface of the anode. Carbon fragments are detected by the collector. The signal is then amplified and sent to the data processing system

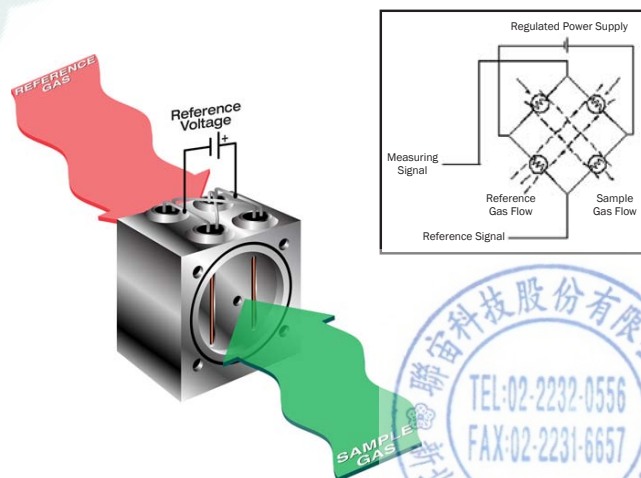


Flame Ionization Detector (FID)  
Figure A

### Thermal Conductivity Detector (TCD)

A thermal conductivity detector measures levels of a gas by its ability to conduct heat. The cell block is heated to a fixed temperature; it consists of four filaments arranged in a Wheatstone bridge configuration. Two filaments are exposed to a reference gas (sealed or flowing) of a known thermal conductivity, while the other two see the sample gas being measured. A reference voltage is applied across the bridge.

If the measuring filaments are exposed to a gas of the same thermal conductivity as the reference filaments, the bridge will be balanced (the differential voltage will be zero). However, if the thermal conductivity of the measuring gas changes, the filaments' temperature will increase or decrease respectively. This change will affect the electrical resistance across the filaments, which creates a measurable voltage differential proportional to the volumetric concentration of the gas of interest.



Thermal Conductivity Detector (TCD)  
Figure B



# 4060 SERIES - GAS CHROMATOGRAPHS

## Electronic Interface

### Features

- Field-proven microprocessor-based electronics provide menu-driven functionality
- Easy-to-view 5-digit LED display for readings
- 2x20 vacuum fluorescent display for menu options, settings, and status
- Built-in diagnostic capability
- EEPROM to store factory defaults in the event of loss of power
- Ready for auto-calibration and remote-calibration with external solenoid valves (integral cal valves available as option)
- Automatic flame ignition / re-ignition and flame-out guard circuitry (for FID detector)
- Methanizer available with FID version for detection of carbon monoxide and carbon dioxide

### I/O

- 0-1 VDC and 4-20 mADC (isolated) analog outputs
- 0-1 VDC and 4-20 mADC gas identification outputs
- RS-232 duplex digital output
- Two (2) fully-configurable concentration outputs with Form-C relay contacts
- System alarm with Form-C relay contact
- Next Generations will have up to four (8) gas identification outputs, Form-A type



Model 4060



Series 4080 MTBE in H<sub>2</sub>O System

## Common Detectable Gases (Contact TAI for feasibility on other applications)

4060/FID		4060/TC	
Acetaldehyde	Hexane	Argon impurity	Hydrogen sulfide
Benzene	Methane	Argon purity	Krypton
Butane	MTBE	Carbon dioxide	Nitrogen impurity
Carbon dioxide*	Propane	Carbon monoxide	Nitrogen purity
Carbon monoxide*	Propylene	Helium	Xenon
Ethane	Toluene	Hydrogen	
Ethyl benzene	VOCs		
Ethylene	Xylene		

\* Measurement achieved with methanizer

# 4060 SERIES - GAS CHROMATOGRAPHS

## Teledyne Tracs™ Diagnostic Software

Tracs™ software developed by TAI is a unique program to unveil chromatogram and compound retention sequences on which concentrations of compounds of interest are calculated. It provides valuable access for an ordinary user to look into inside the complicated GC world with a computerized tool. It suits the needs for high accuracy in GC technique and for ease of communication in digital format.

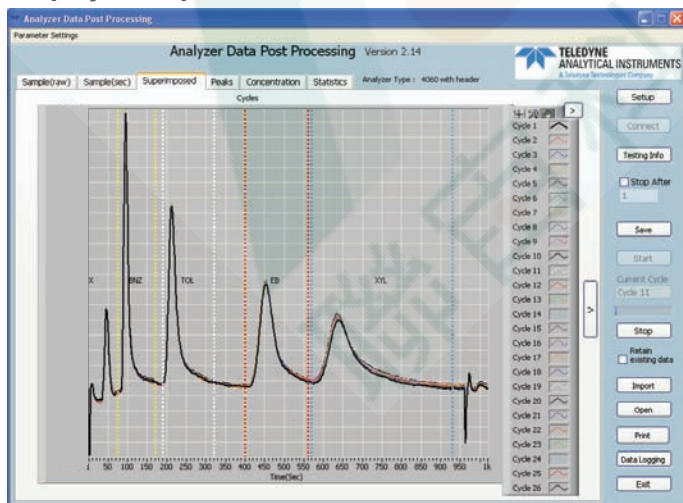
### Features:

- Bi-directional communication of analyzer's range, alarm and timing settings which can be remotely uploaded and downloaded
- Acquires real-time raw data for continuous display of chromatograms
- Chromatograms can be superimposed upon one another to verify repeatability
- Elution peaks can be displayed within their own respective timing frames or individually manipulated for optimal peak scrutinization
- Statistical summary including analytical calculation of measurements, distribution of values and deviations
- Data-logging
- Saving and retrieving of digitized data files

### Advantages:

- Ease of troubleshooting and root-cause diagnosis
- Faster and more comprehensive factory technical support
- Better analyzer performance monitoring and measurement evaluation

### Display examples:



Superimposed Chromatograms

Compound Of Interest	BHZ (0.00 - 500.00)	TOL (0.00 - 500.00)	EB (0.00 - 500.00)	XYL (0.00 - 500.00)	BTX (0.00 - 1000.00)
Span Concentration	199.00	200.00	201.00	200.00	800.00
Number of Samples	10	10	10	10	10
Average	201.60	198.60	204.50	196.40	801.10
Minimum	199.00	193.00	197.00	184.00	789.00
Maximum	205.00	205.00	211.00	213.00	815.00
Variation Range	6.00	12.00	14.00	29.00	25.00
Variation Full Scale (%)	+0.60	+1.20	+1.40	+2.90	+1.60
Standard Deviation	1.897	3.340	4.552	8.030	10.257
% RSD	0.941	1.662	2.225	4.069	1.282

Statistical Summary

# 4060 SERIES - GAS CHROMATOGRAPHS

## Technical Specifications

	4060/FID	4060/TC
Sensing Technology	Flame-Ionization Detector (FID)	Thermal Conductivity Detector (TCD)
Gas and Ranges	Hydrocarbon compounds Trace or percent level detection (Contact factory to verify application)	Most gases Trace or percent level detection (Contact factory to verify application)
Sensitivity	1% of full-scale	1% of full-scale
Accuracy	± 2% of full-scale (at constant temperature)	± 2% of full-scale (at constant temperature)
Repeatability	1% of full-scale through all ranges	1% of full-scale through all ranges
Response Time	Application Dependent	Application Dependent
Operating Temperature	40-110°F (4-43°C)	40-110°F (4-43°C)
Zero and Span Noise	Less than 0.5% of full-scale	Less than 0.5% of full-scale
Zero and Span Drift	2% of full-scale per week	2% of full-scale per week
Analog Outputs	0-1 VDC and 4-20 mADC isolated (one output with Gas ID for 3+ gases)	0-1 VDC and 4-20 mADC isolated (one output with Gas ID for 3+ gases)
Alarms	One system alarm and two concentration alarms. Form-C relays rated @ 3A 250VAC resistive	One system alarm and two concentration alarms. Form-C relays rated @ 3A 250VAC resistive
Supply Voltage	110 or 220 VAC 50/60 Hz	110 or 220 VAC 50/60 Hz
Maximum Power Consumption	600 VA	600 VA
Maximum Load Impedance of 4-20 mA Output	500 ohms	500 ohms
Sample Flow Rate	1 SCFH (0.5 LPM) standard	1 SCFH (0.5 LPM) standard
Dimensions	19" W x 8.75" H x 22.5" D (483 x 222 x 572mm)	19" W x 8.75" H x 16.5" D (483 x 222 x 419mm)







聯宙科技股份有限公司  
Atlas Tech. Corp.  
[www.atlasgroup.com.tw](http://www.atlasgroup.com.tw)

地址: 台灣新北市永和區保生路一號22樓  
Add: 22F., No.1, Baosheng Rd., Yonghe  
Dist., New Taipei City 23444, Taiwan

Tel: +886.2.2232.0556  
Fax: +886.2.2231.6657  
[atlas@atlasgroup.com.tw](mailto:atlas@atlasgroup.com.tw)

